

Florida Department of Environmental Protection



Title and Land Records Section

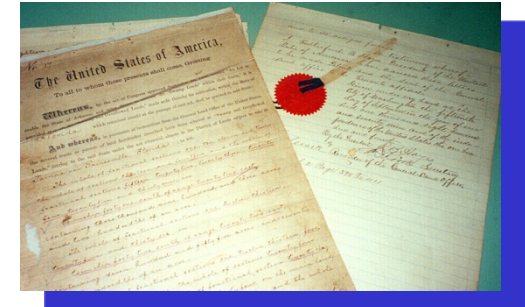
State Land Records Uses, Preservation and Access

May 9, 2013





State Land Records Vault



1821

Florida Becomes a Territory of the U.S.

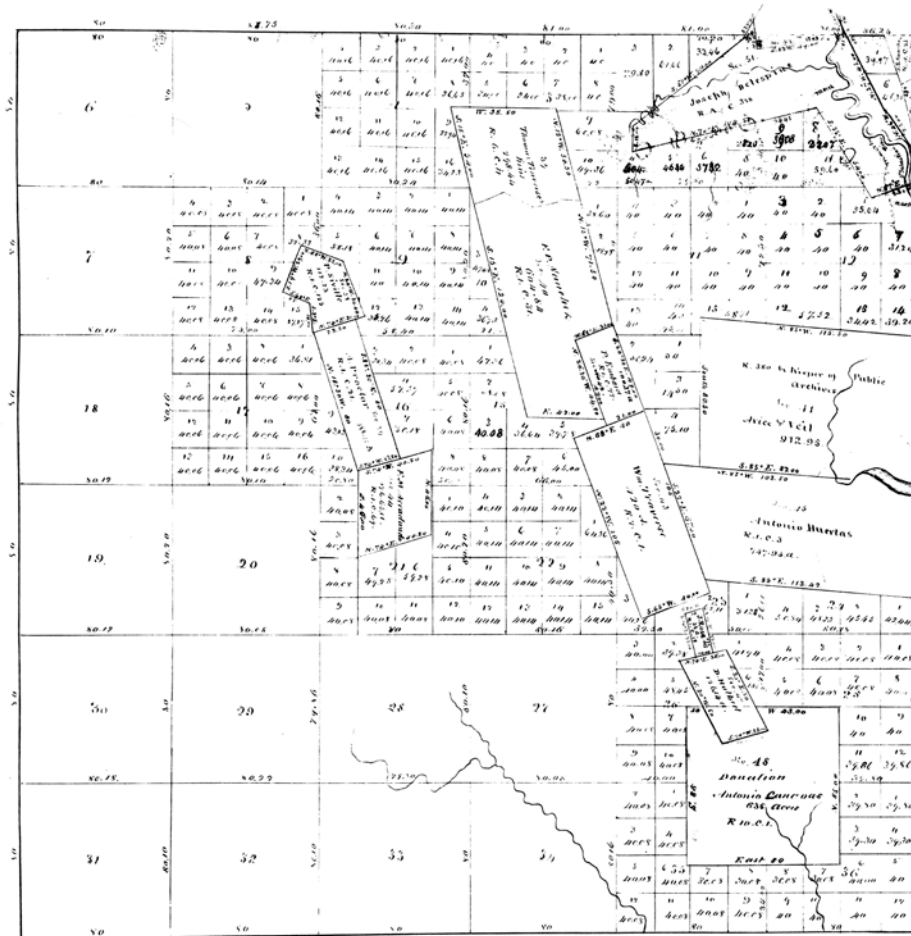




1824

GLO Surveys and Land Sales Commence

T. 7. S. R. 29 E



CONTENTS.

No.	Area	No.	Area	No.	Area
1	24762	13	25	25	25
2	34725	14	25326	26	26
3	11200	15	26707	27	27
4	61543	16	37606	28	28
5	61543	17	42727	29	29
6	61543	18	60132	30	30
7	60126	19	60132	31	31
8	33127	20	60132	32	32
9	34208	21	60132	33	33
10	17227	22	60132	34	34
11	60127	23	12727	35	35
12	12727	24	12727	36	36
Total: 54762					

Sub to claim to be sub. Part East.

Confirm	Private Claims	No.	Area	No.	Area	No.	Area
Don't know	Don't know	25	25	25	25	25	25
P. Muecas	P. Muecas	26	26	26	26	26	26
A. Muecas	A. Muecas	27	27	27	27	27	27
P. Muecas	P. Muecas	28	28	28	28	28	28
A. Muecas	A. Muecas	29	29	29	29	29	29
P. Muecas	P. Muecas	30	30	30	30	30	30
A. Muecas	A. Muecas	31	31	31	31	31	31
P. Muecas	P. Muecas	32	32	32	32	32	32
A. Muecas	A. Muecas	33	33	33	33	33	33
P. Muecas	P. Muecas	34	34	34	34	34	34
A. Muecas	A. Muecas	35	35	35	35	35	35
P. Muecas	P. Muecas	36	36	36	36	36	36
A. Muecas	A. Muecas	37	37	37	37	37	37
P. Muecas	P. Muecas	38	38	38	38	38	38
A. Muecas	A. Muecas	39	39	39	39	39	39
P. Muecas	P. Muecas	40	40	40	40	40	40
A. Muecas	A. Muecas	41	41	41	41	41	41
P. Muecas	P. Muecas	42	42	42	42	42	42
A. Muecas	A. Muecas	43	43	43	43	43	43
P. Muecas	P. Muecas	44	44	44	44	44	44
A. Muecas	A. Muecas	45	45	45	45	45	45
P. Muecas	P. Muecas	46	46	46	46	46	46
A. Muecas	A. Muecas	47	47	47	47	47	47
P. Muecas	P. Muecas	48	48	48	48	48	48
A. Muecas	A. Muecas	49	49	49	49	49	49
P. Muecas	P. Muecas	50	50	50	50	50	50
A. Muecas	A. Muecas	51	51	51	51	51	51
P. Muecas	P. Muecas	52	52	52	52	52	52
A. Muecas	A. Muecas	53	53	53	53	53	53
P. Muecas	P. Muecas	54	54	54	54	54	54
A. Muecas	A. Muecas	55	55	55	55	55	55
P. Muecas	P. Muecas	56	56	56	56	56	56
A. Muecas	A. Muecas	57	57	57	57	57	57
P. Muecas	P. Muecas	58	58	58	58	58	58
A. Muecas	A. Muecas	59	59	59	59	59	59
P. Muecas	P. Muecas	60	60	60	60	60	60
A. Muecas	A. Muecas	61	61	61	61	61	61
P. Muecas	P. Muecas	62	62	62	62	62	62
A. Muecas	A. Muecas	63	63	63	63	63	63
P. Muecas	P. Muecas	64	64	64	64	64	64
A. Muecas	A. Muecas	65	65	65	65	65	65
P. Muecas	P. Muecas	66	66	66	66	66	66
A. Muecas	A. Muecas	67	67	67	67	67	67
P. Muecas	P. Muecas	68	68	68	68	68	68
A. Muecas	A. Muecas	69	69	69	69	69	69
P. Muecas	P. Muecas	70	70	70	70	70	70
A. Muecas	A. Muecas	71	71	71	71	71	71
P. Muecas	P. Muecas	72	72	72	72	72	72
A. Muecas	A. Muecas	73	73	73	73	73	73
P. Muecas	P. Muecas	74	74	74	74	74	74
A. Muecas	A. Muecas	75	75	75	75	75	75
P. Muecas	P. Muecas	76	76	76	76	76	76
A. Muecas	A. Muecas	77	77	77	77	77	77
P. Muecas	P. Muecas	78	78	78	78	78	78
A. Muecas	A. Muecas	79	79	79	79	79	79
P. Muecas	P. Muecas	80	80	80	80	80	80
A. Muecas	A. Muecas	81	81	81	81	81	81
P. Muecas	P. Muecas	82	82	82	82	82	82
A. Muecas	A. Muecas	83	83	83	83	83	83
P. Muecas	P. Muecas	84	84	84	84	84	84
A. Muecas	A. Muecas	85	85	85	85	85	85
P. Muecas	P. Muecas	86	86	86	86	86	86
A. Muecas	A. Muecas	87	87	87	87	87	87
P. Muecas	P. Muecas	88	88	88	88	88	88
A. Muecas	A. Muecas	89	89	89	89	89	89
P. Muecas	P. Muecas	90	90	90	90	90	90
A. Muecas	A. Muecas	91	91	91	91	91	91
P. Muecas	P. Muecas	92	92	92	92	92	92
A. Muecas	A. Muecas	93	93	93	93	93	93
P. Muecas	P. Muecas	94	94	94	94	94	94
A. Muecas	A. Muecas	95	95	95	95	95	95
P. Muecas	P. Muecas	96	96	96	96	96	96
A. Muecas	A. Muecas	97	97	97	97	97	97
P. Muecas	P. Muecas	98	98	98	98	98	98
A. Muecas	A. Muecas	99	99	99	99	99	99
P. Muecas	P. Muecas	100	100	100	100	100	100

In Interior Township lines, the lines, together with the Private Claims from Sec. 37 to 50 inclusive, were surveyed by Henry Clement and J. B. Clements, Sep. 1834. The North boundary of Township, Corner line, in Secs. 1, 2, and 12, and Private Claims, Secs. 51 and 52, were surveyed in 1849, by R. W. Harris, Sep. 1849, under contract with the Surveyor General, Florida, dated June 1849.

J. R. King
Peter Foster
F. Weiden
Gasper Carreras } Chainmen

Examined, compared with field notes & Apprs proved
13 March 1850. S. A. Latham
Thos. Bennett



1845

Florida Becomes a State

- 500,000 acres of Internal Improvement Lands
- Eight Sections of Land to Establish Seat of Government
- Two Townships and all Section 16s for Education



1851

Board of Internal Improvement

1855

Trustees of the Internal Improvement Fund

1975

Board of Trustees part of Department of Natural Resources, later Department of Environmental Protection

1990

Scan and digitization of State Lands records begins



Historical Research State Ownership



Duplicate

Sir,

Surveyor General's Office
St. Augustine

1849

Having been appointed one of the Deputy Surveyors of private claims in the State of Florida you will adjust your chain and compass by the Standards in the office of the Surveyor General at this place. You should have two chains with you in the field, one to be used as a Standard by which from day to day to correct the other the latter to be used in your field work. As soon as your field of operations shall be designated by the Surveyor General, you will repair to it circulating as extensively as practicable the notices of your contemplated surveys in the particular section of country allotted to you, copies of which will be furnished you by the Surveyor General. You will be furnished by the Surveyor General with a list of the private claims within your district giving the Numbers and dates of the reports names of Confirtees Numbers of claims the act confirming the same the extent confirmed the surveys under Spanish authority where such has been made and where not proof of localities &c. Where any of those claims are based upon Spanish surveys which may be confirmed to the full extent by act of Congress or surveys confirmed by final decree of Court you will locate them with strict conformity with those surveys. Where there are no such surveys they must be surveyed agreeably to the natural and well established side of the claim as shown by the original evidence of title where the limits of a claim are vague or indefinite you will give notice to all the parties in interest that at a time and place to be designated by you an opportunity will be afforded them to produce evidence showing the true location of such claim; the same course will be pursued where a claim is confirmed for less quantity than is embraced by the grant or survey that the parties themselves may designate the land they wish to obtain under the

Duplicate

Surveyor General's Office
St. Augustine 5 Oct. 1849.

Sir,

Having been appointed one of the Deputy Surveyors of private claims in the State of Florida you will adjust your chain and compass by the Standard in the office of the Surveyor General at this place. You should have two chains with you in the field, one to be used as a standard by which from day to day to correct the other the latter to be used in your field work. As soon as your field operations shall be designated by the Surveyor General, you will repair to it circulating as extensively as practicable the notices of your contemplated surveys in the particular section of the country allotted to you, copies of which will be furnished you by the Surveyor General. You will be furnished by the Surveyor General with a list of the private claims within your district giving the numbers and dates of the reports names of confirtees number of claims the act confirming the same the extent confirmed the surveys under Spanish Authority where such has been made and where not proof of localities &c.

Where any of those claims are based upon Spanish surveys which may be confirmed to the full extent by act of Congress or surveys confirmed by final decree of Court you will locate them with strict conformity with those surveys. Where there are no such surveys they must be surveyed agreeably to the natural and well established call of the claim as shown by the original evidence of title where the limits of a claim are vague or indefinite you will give notice to all the parties in interest that at a time and place to be designated by you an opportunity will be afforded them to produce evidence showing the true location of such claim; the same course will be pursued where a claim is confirmed for less quantity than is embraced by the grant or survey that the parties themselves may designate the land they wish to obtain under the confirmation; and in these cases you will lay off within the limits of the original claim the lands which the parties may select to the extent of the confirmation and no more.

When the claims are not founded on any written evidence of title and are merely head rights or Settlements you will require the locality of the original improvements to be designated by proper testimony and survey the claims in a square form so as to place the improvements as nearly as practicable in the center. But where it is practicable to select a tract, say a section or subdivision of sections, that will give the area of the claim, and embrace the improvements, such tract or tracts must be selected and designated as the survey of the claim. Where persons have occupied and improved lands surveyed to them under their grants which surveys conform substantially to the grant and confirmation, And do not interfere with the rights of others, such surveys will be confirmed, retraced and returned. All interferences will be surveyed and returned, designating the area of such interferences and the dates of the respective grants and confirmation.

In locating these private claims, the connection of their boundaries, with the adjacent line to the public surveys must be given; that the areas of the surrounding fractions of public lands may be calculated. And where the lines and corners of the original survey of the public lands are obliterated, so that they can not be identified, and therefore those connections can not be obtained, you will retrace those lines in strict conformity with the original field notes, apportioning in just proportions all discrepancies in courses or distances, which may be found between the field notes of the original surveys, and the operations in the field among the lines of






BTLDS website:

<http://tlhdsweb.dep.state.fl.us>



 Click on myflorida.com
logo to go home







[search](#) | [directory](#) | [contact us](#) | [411](#) | [subscribe](#) | [tour](#) | [help](#)

[Environment](#) > [Search](#) > Land Document Search

Land Document Search

[Contact Us](#) | [FAQ](#)

- If you know the document type, select it first.
- Fill in at least one field, then click the Search button.

Document Type: -- Any Document Type -- 			
Doc./Instrument No:	<input type="text"/>	P.A. Number:	<input type="text"/>
Doc. Date:	<input type="text"/> / <input type="text"/> / <input type="text"/>	Grant:	<input type="text"/>
Individual Last Name:	<input type="text"/>	Subdivision:	<input type="text"/>
Individual First Name:	<input type="text"/>	Certificate Year:	<input type="text"/>
Section:	<input type="text"/>	Certificate No:	<input type="text"/>
Township Nr. / Dir.:	<input type="text"/> / 	Volume / Component:	<input type="text"/> / 
Range Nr. / Dir.:	<input type="text"/> / 	Page:	<input type="text"/>
Orig. County Name:	-- All Counties -- 	Page Modifier:	<input type="text"/>
Orig. Rec. Book - Page:	<input type="text"/> - <input type="text"/>	Patent Office Name:	-- All Offices -- 
<div><input type="button" value="Search"/> <input type="button" value="Clear"/> Search Tips</div>			



LABINS

Land Boundary Information System

The screenshot displays the LABINS (Land Boundary Information System) website. The header includes the Florida Department of Environmental Protection logo and navigation links: LABINS, Home, Survey Data, Mapping Data, County Data, and Bureau of Survey and Mapping. The main content area features the LABINS logo and the text "Land Boundary Information System" and "On-Line Survey Information and Maps for the State of Florida". A "Survey Data" section lists "Horizontal and Vertical Control", "Land Records", and "Water Boundary Data", each with a "Map Interface" link. A red-bordered box highlights a message: "Original maps are available through pull-down menus. Read the Instructions for using the New Map if needed. Send feedback to fls_labins@hotmail.com." Below this, a "Map Interface" section displays a grid of map types: DOQQ (Digital Orthophoto Imagery), HIGH-RES (High-Resolution Digital Imagery), DEM (Digital Elevation Models), DRG (Digital Raster Graphics), DLG (Digital Line Graphics), and NWI (National Wetlands Inventory (PDF)). The footer contains contact information: "Land Boundary Information System", "Send Email", "Voice 850.644.2305", and "FAX 850.644.7360".

LABINS Home Survey Data Mapping Data County Data Bureau of Survey and Mapping

LABINS
Land Boundary Information System
On-Line Survey Information and Maps for the State of Florida

Survey Data

- Horizontal and Vertical Control
- Land Records
- Water Boundary Data

Original maps are available through pull-down menus. Read the [Instructions for using the New Map](#) if needed. Send feedback to fls_labins@hotmail.com.

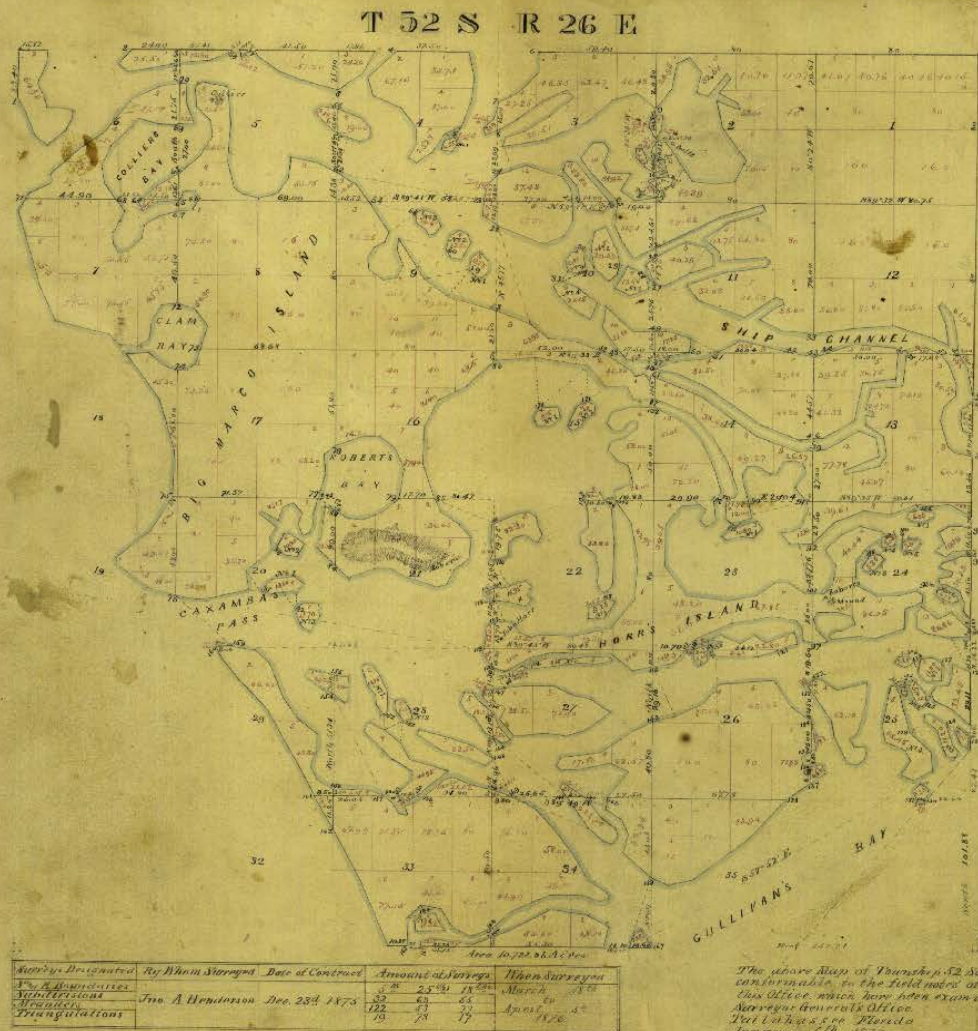
Map Interface

DOQQ Digital Orthophoto Imagery	HIGH-RES High-Resolution Digital Imagery	DEM Digital Elevation Models
DRG Digital Raster Graphics	DLG Digital Line Graphics	NWI National Wetlands Inventory (PDF)

Land Boundary Information System Send Email Voice 850.644.2305 FAX 850.644.7360



GLO Plat - Color



By post President's Order dated
April 13, 1876, Lot 7 of Sec. 34
is permanently reserved for
light-house purposes in con-
nection with the light sta-
tion at Cape Romano, Fla.
See Commissioner's Letter 5
of April 30, 1876.
See also S. 534, R. 26E.

Scale - 50 Chs to 1 in.
Magnified 100 to 1 in.

The above Map of Township 52 South, Range 26 East is strictly
conformable to the field notes of the survey thereof on file in
this Office, which have been examined and approved.
Surveyor General's Office
Tallahassee, Florida
January 6, 1877

Wm. H. Hall
Sur. Genl.

Sales Book Plat



GLO Field Notes

11

bears

A pine 10 in dia S $52\frac{1}{4}$ E 45 d

" pine 15 in dia N $61\frac{1}{2}$ W 17 d

No other trees convenient

Land poor & subject to
over flow. Limbs of small
pine & Cypress thin by weather
over the country.

Met between Sections 34
& 35

Variation $34\frac{1}{4}$ E 30 d

201.00 Swamp.

361.00 Left Swamp.

401.00 Set lightwood stake for $1\frac{1}{4}$
Sec. corner from which
a pine ~~in~~ bears
N $22\frac{1}{4}$ W 22 d
+ a pine 6 in dia bears



LABINS website:

<http://data.labins.org>